

Geometric mean of partial positive definite matrices with missing entries

Hayoung Choi, Sejong Kim & Yuanming Shi

To cite this article: Hayoung Choi, Sejong Kim & Yuanming Shi (2019): Geometric mean of partial positive definite matrices with missing entries, Linear and Multilinear Algebra, DOI: [10.1080/03081087.2019.1585741](https://doi.org/10.1080/03081087.2019.1585741)

To link to this article: <https://doi.org/10.1080/03081087.2019.1585741>



Published online: 01 Mar 2019.



Submit your article to this journal [↗](#)



Article views: 7



View Crossmark data [↗](#)



Geometric mean of partial positive definite matrices with missing entries

Hayoung Choi^a, Sejong Kim^b and Yuanming Shi^a

^aSchool of Information Science and Technology, Shanghai Tech University, Shanghai, People's Republic of China; ^bDepartment of Mathematics, Chungbuk National University, Cheongju, Republic of Korea

ABSTRACT

In this paper the geometric mean of partial positive definite matrices with missing entries is considered. The weighted geometric mean of two sets of positive matrices is defined, and we show whether such a geometric mean holds certain properties which the weighted geometric mean of two positive definite matrices satisfies. Additionally, counterexamples demonstrate that certain properties do not hold. A Loewner order on partial Hermitian matrices is also defined. The known results for the maximum determinant positive completion are developed with an integral representation, and the results are applied to the weighted geometric mean of two partial positive definite matrices with missing entries. Moreover, a relationship between two positive definite completions is established with respect to their determinants, showing relationship between their entropy for a zero-mean, multivariate Gaussian distribution. Computational results as well as one application are shown.

ARTICLE HISTORY

Received 11 January 2018
Accepted 14 February 2019

COMMUNICATED BY

Y. Lim

KEYWORDS

Geometric mean; positive definite completions; maximum determinant; entropy; covariance matrix

1. Introduction

The geometric mean of two positive definite matrices A and B is given by an explicit formula [1,2]:

$$A\#_{1/2}B = A^{1/2}(A^{-1/2}BA^{-1/2})^{1/2}A^{1/2}. \quad (1)$$

This is known as the unique positive definite solution X of the Riccati equation $XA^{-1}X = B$ [3,4]. Moreover, it can be extended to the unique geodesic $t \in [0, 1] \mapsto A\#_tB = A^{1/2}(A^{-1/2}BA^{-1/2})^tA^{1/2}$ connecting from A to B for the Riemannian trace distance on the open convex cone of positive definite matrices [5,6]. This geodesic is called the weighted geometric mean of A and B . A various theories of extending two-variable geometric mean to multi-variable case have been developed: see [7–11]. A general framework of multi-variable operator means containing the multivariable geometric mean as a special case is considered [12]. Multi-variable geometric means as well as the two-variable geometric mean of positive definite matrices have been considered as important objects in many pure and applied areas, such as data points in a diverse area of settings [13–15].

In many research, there is the potential for missing or incomplete data since data obtained from physical experiments and phenomena are often corrupt or incomplete. The issue with missing data is that nearly all classic and modern statistical and analytical techniques deal with complete data. It is vital to be able to deal with missing data rather than to delete the incomplete data from the analysis. Over the past 20 years techniques for dealing with missing data in the most appropriate and desirable way possible have been extensively studied in many different fields such as data analysis, statistics, optimization, matrix theory [16–19].

Covariance matrices are used as features for many signal and image processing applications, including biomedical image segmentation, radar detection, texture analysis, etc. Recently new geometric approach has been developed for various problems, such as how to measure the distance between two covariance matrices, how to find the average matrix of covariance matrices [20–28]. Especially, in [29] Riemannian mean of covariance matrices to space-time adaptive processing is considered. Recently it becomes more and more important to deal with incomplete covariance matrices in perturbed environment [30]. General strategy for completing a partially specified covariance matrix was studied by Dempster [31]. A zero-mean, multivariate Gaussian distribution on \mathbb{R}^n with density

$$f(x) = (2\pi)^{-n/2} |\Sigma|^{-1/2} \exp \left\{ -\frac{1}{2} x^\top \Sigma^{-1} x \right\}$$

is considered with a partially specified covariance matrix Σ . Dempster proposed a completion which maximizes the entropy

$$H(f) = - \int_{\mathbb{R}^n} \log(f(x)) f(x) dx \quad (2)$$

$$= \frac{1}{2} \log(\det \Sigma) + \frac{1}{2} n(1 + \log(2\pi)), \quad (3)$$

implying that the completion has the maximum determinant. For more information about the maximum determinant and the maximum entropy [32–34].

We consider the geodesic and the geometric mean of two covariance matrices as space-time adaptive processing, additionally with missing entries, i.e. partially specified covariance matrices. As the process of averaging, the concept of geometric mean of two positive definite matrices with missing entries will play a role to apply a geometric mean to applications in such areas. In this paper we mainly study the geometric mean of two partial positive definite matrices with missing entries. After a series of preliminary definitions and known results for a graph, a partial matrix, and the weighted geometric mean of two positive matrices in Section 2 that will be used throughout this paper, we consider in Section 3 the weighted geometric mean of two subsets of the positive cone. Several meaningful examples for the geometric mean of two subsets are given, and topological properties for it are shown. Using the geometric mean of two sets of positive definite completions, in Section 4 we define the geometric mean of two partial positive definite matrices and show that it holds several of the known properties for the geometric mean of two positive definite matrices. In Section 5, we define a partial Loewner order for partial Hermitian matrices and characterize the difference of two partial matrices. In Section 6, the known results for a positive definite completion of maximizing determinant are developed with

an integral representation and are applied to the weighted geometric mean of two partial positive definite matrices. Some interesting computational results are found in Section 7.

2. Preliminary

2.1. Graph and positive matrix completion

In 1981, H. Dym and I. Gohberg studied extensions of band matrices with band inverses [35]. In 1984, R. Grone, C. R. Johnson, E. M. Sá, and H. Wolkowicz considered positive definite completion of partial Hermitian matrices (some entries specified, some missing) [36]. They showed that if the undirected graph of the specified entries is chordal, a positive definite completion necessarily exists. Johnson, Lundquist, and Naevald studied positive definite Toeplitz matrix completions in 1997. In [37], they proved that a pattern P of an $(n + 1) \times (n + 1)$ partial Toeplitz matrix is positive (semi) definite completable if and only if $P = \{k, 2k, \dots, mk\}$ for some $m \in \mathbb{N}$ and $k \in \mathbb{N}$.

Let V be the set of vertices, and let $\{x, y\}$ denote the edge connecting two points $x, y \in V$. A *finite undirected graph* is a pair $G = (V, E)$ where the set V of vertices is finite, and the set E of edges is a subset of the set $\{\{x, y\} : x, y \in V\}$. In general E may contain *loops* which means that $x = y$. In this paper we assume that the graph always has all loops. Without loss of generality we assume that $V = \{1, 2, \dots, n\}$.

Define a G -*partial matrix* as a set of complex numbers, denoted by $[a_{ij}]_G$ or $A(G)$, where a_{ij} is specified if and only if $\{i, j\} \in E$. A *completion* of $A(G) = [a_{ij}]_G$ is an $n \times n$ matrix $M = [m_{ij}]$ which satisfies $m_{ij} = a_{ij}$ for all $\{i, j\} \in E$. We say that M is a *positive (semi-)definite completion* of $A(G)$ if and only if M is a completion of $A(G)$ and M is positive (semi-)definite. A *clique* is a subset $C \subset V$ having the property that $\{x, y\} \in E$ for all $x, y \in C$. A *cycle* in G is a sequence of pairwise distinct vertices $\gamma = (v_1, \dots, v_s)$ having the property that $\{v_1, v_2\}, \{v_2, v_3\}, \dots, \{v_{s-1}, v_s\}, \{v_s, v_1\} \in E$, and s is referred to as the *length* of the cycle. A *chord* of the cycle γ is an edge $\{v_i, v_j\} \in E$ where $1 \leq i < j \leq s$, $\{v_i, v_j\} \neq \{v_1, v_s\}$, and $|i - j| \geq 2$.

Assume $V = \{1, \dots, n\}$, and let $A(G) = [a_{ij}]_G$ be a G -partial matrix. We say that $A(G)$ is a *partial positive (semi-)definite* if

$$a_{ji} = \bar{a}_{ij} \quad \text{for all } \{i, j\} \in E$$

and for any clique C of G , this principal submatrix $[a_{ij}]_{i, j \in C}$ of $A(G)$ is positive (semi-)definite. The graph G is called *positive (semi-)definite completable* if any G -partial positive (semi-)definite matrix has a positive (semi-)definite completion.

The following proposition shows that the terms ‘positive definite completable’ and ‘positive semi-definite completable’ coincide [36].

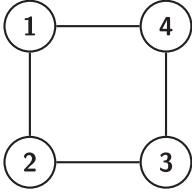
Proposition 2.1: *A graph G is positive definite completable if and only if G is positive semi-definite completable.*

From now on, we will henceforth only use the term ‘completable’. A graph G is *chordal* if there are no minimal cycles of length ≥ 4 . Equivalently, every cycle of length ≥ 4 has a chord. This concept characterizes completable graphs [36].

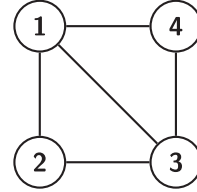
Theorem 2.2: *The graph G is completable if and only if G is chordal.*

Example 2.3: Let $G = (V, E)$ be a graph with $V = \{1, 2, 3, 4\}$ and

$$E = \{\{1, 1\}, \{1, 2\}, \{1, 4\}, \{2, 2\}, \{2, 3\}, \{3, 3\}, \{3, 4\}, \{4, 4\}\}.$$



Example 2.3: Non-chordal graph.



Example 2.4: A chordal graph.

Since the graph G is not chordal, by Theorem 2.2 there exists a partial positive definite matrix $A(G)$ which does not have any positive completions. For example, the following partial positive definite matrix does not have a positive (semi-)definite completion.

$$N = \begin{bmatrix} 1 & -1 & ? & 0 \\ -1 & 2 & 2 & ? \\ ? & 2 & 3 & 1 \\ 0 & ? & 1 & 1 \end{bmatrix}$$

whose missing entries are denoted by ?.

Example 2.4: Let $G = (V, E)$ be a graph with $V = \{1, 2, 3, 4\}$ and

$$E = \{\{1, 1\}, \{1, 3\}, \{1, 4\}, \{2, 2\}, \{2, 3\}, \{3, 3\}, \{3, 4\}, \{4, 4\}\}.$$

Since the graph G is chordal, by Theorem 2.2 any matrix $A(G)$ has a positive (semi-)definite completion. That is, the following partial positive definite matrix has a positive definite completion.

$$A(G) = \begin{bmatrix} * & ? & * & * \\ ? & * & * & ? \\ * & * & * & * \\ * & ? & * & * \end{bmatrix}$$

whose missing entries are denoted by ? and specified entries are denoted by *. For example, since the G -partial matrices

$$A(G) = \begin{bmatrix} 1 & ? & 1 & 1 \\ ? & 5 & 1 & ? \\ 1 & 1 & 3 & 1 \\ 1 & ? & 1 & 2 \end{bmatrix} \quad \text{and} \quad B(G) = \begin{bmatrix} 4 & ? & 2 & -1 \\ ? & 3 & 1 & ? \\ 2 & 1 & 6 & 1 \\ -1 & ? & 1 & 3 \end{bmatrix}$$

are partial positive definite, they have positive definite completions.

Let $M_{m \times n} := M_{m \times n}(\mathbb{C})$ be a set of all $m \times n$ matrices with entries in the field \mathbb{C} of complex numbers. We equip on $M_{m \times n}$ with the inner product defined as

$$\langle A, B \rangle := \operatorname{tr}(A^*B) = \sum_{i,j=1}^{m,n} \overline{a_{ij}} b_{ij},$$

for $A = [a_{ij}], B = [b_{ij}] \in M_{m \times n}$, where $A^* = \bar{A}^T$ is a complex conjugate transpose of A . The inner product naturally gives us an l_2 norm, known as the Frobenius norm and Hilbert–Schmidt norm, defined by

$$\|A\|_2 = [\operatorname{tr}(A^*A)]^{1/2}.$$

We simply denote as $M_n := M_{n \times n}$. We also denote as GL_n the general linear group in M_n .

Remark 2.5: The operator norm of $A \in M_n$ is defined as

$$\|A\| := \max_{\|x\|_2=1} \|Ax\|_2.$$

Note that

$$\|A\|_2 = \left[\sum_{i=1}^n \sigma_i^2(A) \right]^{1/2} \quad \text{and} \quad \|A\| = \sigma_1(A),$$

where $\sigma_1(A) \geq \dots \geq \sigma_n(A)$ are (non-negative) singular values of A in decreasing order. Since $\|A\| \leq \|A\|_2 \leq n\|A\|$, two norms $\|\cdot\|_2$ and $\|\cdot\|$ are compatible.

Let $\mathbb{H} \subset M_n$ be the real vector space of all Hermitian matrices, and let $\mathbb{P} \subset \mathbb{H}$ be the open convex cone of $n \times n$ positive definite matrices. Then the closure $\bar{\mathbb{P}}$ of \mathbb{P} consists of all $n \times n$ positive semi-definite matrices. For any $A, B \in \mathbb{H}$ we denote as $A \leq B$ if and only if $B - A \in \bar{\mathbb{P}}$, and $A < B$ if and only if $B - A \in \mathbb{P}$. This is known as the Loewner partial ordering [38, Section 7.7].

The Frobenius norm $\|\cdot\|_2$ gives rise to the Riemannian trace metric on \mathbb{P} given by

$$\delta(A, B) = \|\log(A^{-1/2}BA^{-1/2})\|_2 \quad (4)$$

for any $A, B \in \mathbb{P}$. Then \mathbb{P} is a Cartan–Hadamard manifold, a simply connected complete Riemannian manifold with non-positive sectional curvature. The curve

$$[0, 1] \ni t \mapsto A\#_t B := A^{1/2}(A^{-1/2}BA^{-1/2})^t A^{1/2}$$

is the unique geodesic from A to B , called the *weighted geometric mean* of positive definite matrices A and B . Note that $A\#B := A\#_{1/2}B$ is the unique midpoint between A and B for the Riemannian metric. We review several known properties of the weighted geometric mean on the open convex cone \mathbb{P} of positive definite matrices.

Theorem 2.6: *The weighted two-variable geometric mean satisfies the following: for any $A, B, C, D \in \mathbb{P}$ and $t \in [0, 1]$*

- (1) $A\#_t B = A^{1-t}B^t$ if A and B commute.

- (2) $(aA)\#_t(bB) = a^{1-t}b^t(A\#_tB)$ for any $a, b > 0$.
- (3) $A\#_tB = B\#_{1-t}A$.
- (4) $A\#_tB \leq C\#_tD$ whenever $A \leq C$ and $B \leq D$.
- (5) $[0, 1] \times \mathbb{P} \times \mathbb{P} \ni (t, A, B) \mapsto A\#_tB \in \mathbb{P}$ is continuous.
- (6) $S^*(A\#_tB)S = (S^*AS)\#_t(S^*BS)$ for any invertible $S \in \text{GL}_n$.
- (7) $[(1-\lambda)A + \lambda B]\#_t[(1-\lambda)C + \lambda D] \geq (1-\lambda)(A\#_tC) + \lambda(B\#_tD)$ for any $\lambda \in [0, 1]$.
- (8) $(A\#_tB)^{-1} = A^{-1}\#_tB^{-1}$.
- (9) $\det(A\#_tB) = (\det A)^{1-t}(\det B)^t$.
- (10) $[(1-t)A^{-1} + tB^{-1}]^{-1} \leq A\#_tB \leq (1-t)A + tB$ for any $t \in [0, 1]$.

Remark 2.7: Item (5) can be described as the map $[0, 1] \times \mathbb{P} \times \mathbb{P} \ni (t, A, B) \mapsto A\#_tB \in \mathbb{P}$ is continuous with respect to the Riemannian trace metric δ :

$$\begin{aligned} \delta(A\#_sB, C\#_tD) &\leq \delta(A\#_sB, A\#_tB) + \delta(A\#_tB, C\#_tD) \\ &\leq |s-t|\delta(A, B) + (1-t)\delta(A, C) + t\delta(B, D) \end{aligned}$$

for any $A, B, C, D \in \mathbb{P}$ and $s, t \in [0, 1]$.

Remark 2.8: One can define the weighted geometric mean for positive semi-definite matrices A and B such as

$$A\#_tB := \lim_{\epsilon \rightarrow 0^+} (A + \epsilon I)\#_t(B + \epsilon I). \quad (5)$$

By Theorem 2.6 (4), $(A + \epsilon I)\#_t(B + \epsilon I)$ is monotone decreasing on $\epsilon > 0$ and is bounded below by O . So it converges, and thus, the equation (5) is well-defined.

3. Weighted geometric mean of two subsets of the positive cone

In this paper we deal with the following weighted geometric mean of two subsets of \mathbb{P} and see its geometric properties.

Definition 3.1: Let $\mathcal{S} \subset \mathbb{P}$ and $\mathcal{T} \subset \mathbb{P}$, and let $t \in [0, 1]$. The weighted geometric mean of two subsets of positive definite matrices is defined by

$$\mathcal{S}\#_t\mathcal{T} := \{S\#_tT \mid S \in \mathcal{S}, T \in \mathcal{T}\}.$$

Example 3.2: The weighted geometric mean of two subsets of \mathbb{P} has a very important concept in the theory of operator, matrix means, and approximation. In order to see this insight, we give several examples in the following.

- (1) The weighted geometric mean $A\#_tB$ of A and B in \mathbb{P} is a special example of that of two subsets $\mathcal{S} = \{A\} \subset \mathbb{P}$ and $\mathcal{T} = \{B\} \subset \mathbb{P}$. Moreover, if two subsets \mathcal{S} and \mathcal{T} have cardinalities of p and q , respectively, then the cardinality of $\mathcal{S}\#_t\mathcal{T}$ is less than or equal to pq .
- (2) For given $A, B \in \overline{\mathbb{P}}$, consider $\mathcal{S} = \{A + \epsilon_1 I : \epsilon_1 > 0\}$ and $\mathcal{T} = \{B + \epsilon_2 I : \epsilon_2 > 0\}$. Then $\mathcal{S}, \mathcal{T} \subset \mathbb{P}$, and

$$(A + \epsilon_1 I)\#_t(B + \epsilon_2 I) \in \mathcal{S}\#_t\mathcal{T},$$

which is a generalized form of the right-hand side in the limit of (5).

- (3) For $A, B, C, D \in \mathbb{P}$ let $\mathcal{S} = [A, B] = \{X \in \mathbb{P} : A \leq X \leq B\}$ and $\mathcal{T} = [C, D] = \{Y \in \mathbb{P} : C \leq Y \leq D\}$. Then by monotonicity of the geometric mean in Theorem 2.6 (4),

$$\mathcal{S} \#_t \mathcal{T} \subseteq [A \#_t C, B \#_t D].$$

- (4) For $A, B \in \mathbb{P}$ let $\mathcal{S} = \{X \in \mathbb{H} : \|A - X\| \leq r_1\}$ and $\mathcal{T} = \{Y \in \mathbb{H} : \|B - Y\| \leq r_2\}$. Then $\mathcal{S}, \mathcal{T} \subset \mathbb{P}$ for sufficiently small $r_1, r_2 > 0$. So the weighted geometric mean of \mathcal{S} and \mathcal{T} , $\mathcal{S} \#_t \mathcal{T}$, can be considered as a set of approximations of $A \#_t B$.

Especially, for the case of (3) in Example 3.2 the following property which is similar to [4, Theorem 3.4] holds.

Proposition 3.3: *Assume that two subsets \mathcal{S} and \mathcal{T} of \mathbb{P} are totally ordered with respect to Loewner order. Then*

$$M \# N = \max \left\{ X \in \mathbb{H} : \begin{pmatrix} A & X \\ X & B \end{pmatrix} \geq 0, A \in \mathcal{S}, B \in \mathcal{T} \right\}, \quad (6)$$

where M is the maximum element of \mathcal{S} and N is the maximum element of \mathcal{T} .

Proof: It is known from Theorem 4.1.3 (iii) in [5] that for given $A \in \mathcal{S}, B \in \mathcal{T}$

$$A \# B = \max \left\{ X \in \mathbb{H} : \begin{pmatrix} A & X \\ X & B \end{pmatrix} \geq 0 \right\}.$$

Since two subsets \mathcal{S} and \mathcal{T} of \mathbb{P} are totally ordered with respect to Loewner order, $A \leq M$ for all $A \in \mathcal{S}$ and $B \leq N$ for all $B \in \mathcal{T}$. By the monotonicity of geometric mean in Theorem 2.6 (4), $A \# B \leq M \# N$, and hence, we obtain (6). ■

Theorem 3.4: *Let $\mathcal{S}, \mathcal{T} \subset \mathbb{P}$, and let $t \in [0, 1]$. Then*

- (1) *if \mathcal{S} and \mathcal{T} are bounded, then so is $\mathcal{S} \#_t \mathcal{T}$,*
- (2) *if \mathcal{S} and \mathcal{T} are closed, then so is $\mathcal{S} \#_t \mathcal{T}$.*

Hence, $\mathcal{S} \#_t \mathcal{T}$ is compact whenever \mathcal{S}, \mathcal{T} are compact.

Proof: Note that it is enough to show (1) and (2) for compactness, since \mathbb{P} is a subset of Euclidean space \mathbb{H} .

- (1) Assume that \mathcal{S} and \mathcal{T} are bounded. By Remark 2.5 $\|A\| \leq c$ for all $A \in \mathcal{S}$ and some constant $c > 0$, and $\|B\| \leq d$ for all $B \in \mathcal{T}$ and some constant $d > 0$. Then $0 < A \leq cI$ for all $A \in \mathcal{S}$, and $0 < B \leq dI$ for all $B \in \mathcal{T}$. By Example 3.2 (3), and Theorem 2.6 (1) and (4), it follows that

$$0 < A \#_t B \leq c^{1-t} d^t I.$$

That is, $\|A \#_t B\| \leq c^{1-t} d^t$, and thus, $\mathcal{S} \#_t \mathcal{T}$ is bounded.

- (2) Let \mathcal{S} and \mathcal{T} be closed. Assume that sequences $A_n \in \mathcal{S}$ and $B_n \in \mathcal{S}$ converge to $A \in \mathcal{S}$ and $B \in \mathcal{T}$ with respect to the Riemannian distance, respectively. By continuity of the geometric mean in Theorem 2.6 (5) and Remark 2.7,

$$A_n \#_t B_n \rightarrow A \#_t B \in \mathcal{S} \#_t \mathcal{T}.$$

Thus, $\mathcal{S} \#_t \mathcal{T}$ is closed. ■

Remark 3.5: Note that the union of a finite number of compact subsets of \mathbb{P} is compact and the intersection of any family of compact subspace of \mathbb{P} is compact. If $\{\mathcal{S}_i\}$ and $\{\mathcal{T}_j\}$ are collections of compact subsets of \mathbb{P} , then

$$\left(\bigcup_{k=1}^n \mathcal{S}_{i_k} \right) \# \left(\bigcup_{k=1}^m \mathcal{T}_{j_k} \right) \quad \text{and} \quad \left(\bigcap_i \mathcal{S}_i \right) \# \left(\bigcap_j \mathcal{T}_j \right)$$

are compact.

Remark 3.6: Assume that $\mathcal{S}, \mathcal{T} \subset \mathbb{P}$ are convex. Let $A, B \in \mathcal{S}$ and $C, D \in \mathcal{T}$. Since \mathcal{S} and \mathcal{T} are convex, $(1 - \lambda)A + \lambda B \in \mathcal{S}$ and $(1 - \lambda)C + \lambda D \in \mathcal{T}$ for any $\lambda \in [0, 1]$, and hence, $[(1 - \lambda)A + \lambda B] \#_t [(1 - \lambda)C + \lambda D] \in \mathcal{S} \#_t \mathcal{T}$. On the other hand, it holds from the joint concavity of geometric mean in Theorem 2.6 (7) that

$$[(1 - \lambda)A + \lambda B] \#_t [(1 - \lambda)C + \lambda D] \geq (1 - \lambda)(A \#_t C) + \lambda(B \#_t D)$$

for any $\lambda \in [0, 1]$. It is questionable whether or not $(1 - \lambda)(A \#_t C) + \lambda(B \#_t D) \in \mathcal{S} \#_t \mathcal{T}$. If it is true, then we can say that $\mathcal{S} \#_t \mathcal{T}$ is convex.

4. Geometric mean of partial positive matrices

From now on, we consider the geometric mean of partial positive matrices. In this paper, we assume that any graph G always includes all loops. That is, any partial matrix does not have missing entries on diagonal. Recall that $\mathbb{H} \subset M_n$ is the real vector space of all Hermitian matrices, $\mathbb{P} \subset \mathbb{H}$ is the open convex cone of $n \times n$ positive definite matrices, and the closure $\bar{\mathbb{P}}$ of \mathbb{P} consists of all $n \times n$ positive semi-definite matrices. We define

$$\mathbb{H}(G) := \{A(G) : A(G) \text{ is a } n \times n G\text{-partial Hermitian matrix.}\},$$

$$\mathbb{P}(G) := \{A(G) \in \mathbb{H}(G) : A(G) \text{ is a partial positive definite matrix.}\}.$$

For a given G -partial matrix $A(G)$, we denote as $\mathfrak{p}[A(G)]$ and $\mathfrak{p}^+[A(G)]$ the sets of all positive semi-definite and positive definite completions of $A(G)$, respectively.

Theorem 4.1: *Let $A(G)$ be a partial positive semidefinite matrix with a completable graph G . Then $\mathfrak{p}[A(G)]$ is non-empty, convex, and compact.*

Proof: Since G is a positive completable graph and $A(G)$ is a partial positive semi-definite matrix, clearly $\mathfrak{p}[A(G)]$ is non-empty. If $M, N \in \mathfrak{p}[A(G)]$, then $(1-t)M + tN \in \mathfrak{p}[A(G)]$ for $t \in [0, 1]$, so $\mathfrak{p}[A(G)]$ is convex. Since we assume that diagonal entries are given, $\mathfrak{p}[A(G)]$ is bounded, since

$$\|M\|_2 = \left[\sum_{i=1}^n \lambda_i^2(M) \right]^{1/2} \leq \text{tr}(M) = \sum_{i=1}^n m_{ii} < \infty$$

for any $M \in \mathfrak{p}[A(G)]$, where $\lambda_i(M)$ denotes the non-negative eigenvalue of M .

Now we show that $\mathfrak{p}[A(G)]$ is closed. Let $M_k = [m_{ij}^{(k)}]$ be a sequence in $\mathfrak{p}[A(G)]$ converging to $M = [m_{ij}]$ in the Frobenius norm. Since $M_k \in \overline{\mathbb{P}}$ for all k , we have $M \in \overline{\mathbb{P}}$. Moreover, since

$$|m_{ij}^{(k)} - m_{ij}| \leq \|M_k - M\|_2,$$

we have that $m_{ij}^{(k)} \rightarrow m_{ij}$ as $k \rightarrow \infty$ for all $1 \leq i, j \leq n$. Since $m_{ij}^{(k)} = m_{ij}$ for all k and $\{i, j\} \in E$, taking the limit as $k \rightarrow \infty$ yields that $m_{ij} = a_{ij}$ for all $\{i, j\} \in E$. So, M is a positive semi-definite completion of $A(G)$, that is, $M \in \mathfrak{p}[A(G)]$. \blacksquare

Remark 4.2: For a partial positive definite matrix $A(G)$ with a completable graph G , one can see easily that $\mathfrak{p}^+[A(G)] \in \mathbb{P}(G)$ is non-empty, convex, and bounded. Since $\mathfrak{p}^+[A(G)] \subset \mathfrak{p}[A(G)]$, we have $\overline{\mathfrak{p}^+[A(G)]} \subset \overline{\mathfrak{p}[A(G)]} = \mathfrak{p}[A(G)]$ by Theorem 4.1, where $\overline{\mathfrak{p}^+[A(G)]}$ is the closure of $\mathfrak{p}^+[A(G)]$. On the other hand, it is questionable that $\mathfrak{p}[A(G)] \subset \mathfrak{p}^+[A(G)]$.

Let G and F be given completable graphs. One can naturally ask to define the geometric mean of partial positive definite matrices $A(G)$ and $B(F)$. Using the geometric mean of subsets of \mathbb{P} in Definition 3.1, we define the geometric mean of two partial positive definite matrices $A(G)$ and $B(F)$ as

$$A(G)\#_t B(F) := \mathfrak{p}^+[A(G)]\#_t \mathfrak{p}^+[B(F)], \quad (7)$$

where $t \in [0, 1]$.

Remark 4.3: Using Remark 2.8, one can define the geometric mean of partial positive semi-definite matrices $A(G)$ and $B(F)$ as

$$\mathfrak{p}[A(G)]\#_t \mathfrak{p}[B(F)].$$

There are some results for the geometric mean of positive semi-definite matrices [3], but it holds more limited properties than that of positive definite matrices. So we consider in this article the geometric mean of partial positive definite matrices.

Remark 4.4: By Theorem 3.4 and Remark 4.2, $A(G)\#_t B(F)$ is bounded for partial positive definite matrices $A(G)$ and $B(F)$ with completable graphs G and F .

It would be interesting to find some properties for $A(G)\#_t B(F)$ corresponding to those in Theorem 2.6.

Remark 4.5: Note that $A(G)\#_t A(G) \neq \mathfrak{p}^+[A(G)]$, since $A_1\#_t A_2$ may not be a positive definite completion of $A(G)$ even though $A_1, A_2 \in \mathfrak{p}^+[A(G)]$. For instance, see Example 2.4. Let

$$A_1 = \begin{bmatrix} 1 & 1 & 1 & 1 \\ 1 & 5 & 1 & 1 \\ 1 & 1 & 3 & 1 \\ 1 & 1 & 1 & 2 \end{bmatrix}, \quad A_2 = \begin{bmatrix} 1 & -1 & 1 & 1 \\ -1 & 5 & 1 & -1 \\ 1 & 1 & 3 & 1 \\ 1 & -1 & 1 & 2 \end{bmatrix}.$$

Then A_1 and A_2 are positive definite completions of $A(G)$. However,

$$A_1\#A_2 \approx \begin{bmatrix} 0.8750 & -0.0769 & 1 & 0.8750 \\ -0.0769 & 4.1251 & 1 & -0.0769 \\ 1 & 1 & 3 & 1 \\ 0.8750 & -0.0769 & 1 & 1.8750 \end{bmatrix},$$

which is not a positive definite completion of $A(G)$. Clearly, it holds that $\mathfrak{p}^+[A(G)] \subset A(G)\#A(G)$.

For $A(G), B(G) \in \mathbb{H}(G)$ with a given graph G , the sum of two G -partial matrices and the scalar product of a G -partial matrix, denoted by $A(G) + B(G)$ and $\alpha A(G)$ are defined by

$$[A(G) + B(G)]_{ij} = \begin{cases} a_{ij} + b_{ij} & \text{if } \{i, j\} \in E, \\ \text{missing} & \text{otherwise,} \end{cases}$$

$$[\alpha A(G)]_{ij} = \begin{cases} \alpha a_{ij} & \text{if } \{i, j\} \in E, \\ \text{missing} & \text{otherwise,} \end{cases}$$

where $A(G) = [a_{ij}]_{\{i,j\} \in E}$ and $B(G) = [b_{ij}]_{\{i,j\} \in E}$, respectively.

Note that $A(G) + B(G)$ and $\alpha A(G)$ are in $\mathbb{H}(G)$. It is natural to define the difference of two G -partial matrices as $A(G) - B(G) := A(G) + (-1)B(G)$.

Let $\mathcal{S} \subset \mathbb{P}$ and let $\alpha > 0$. For convenience, we denote

$$\alpha \mathcal{S} := \{\alpha A : A \in \mathcal{S}\},$$

$$\mathcal{S}^{-1} := \{A^{-1} : A \in \mathcal{S}\}.$$

Note that $\alpha \mathcal{S}, \mathcal{S}^{-1} \subset \mathbb{P}$. It is trivial that

$$\alpha \mathfrak{p}^+[A(G)] = \mathfrak{p}^+[\alpha A(G)], \quad \mathfrak{p}^+[A(G) + B(G)] = \mathfrak{p}^+[A(G)] + \mathfrak{p}^+[B(G)].$$

Proposition 4.6: For completable graphs G and F , let $A(G)$ and $B(F)$ be partial positive definite matrices. Then the following hold:

- (1) $a^{1-t} b^t (\mathfrak{p}^+[A(G)]\#_t \mathfrak{p}^+[B(F)]) = (a \mathfrak{p}^+[A(G)]\#_t (b \mathfrak{p}^+[B(F)]))$ for any $a, b > 0$,
- (2) $\mathfrak{p}^+[A(G)]\#_t \mathfrak{p}^+[B(F)] = \mathfrak{p}^+[B(F)]\#_{1-t} \mathfrak{p}^+[A(G)]$, and
- (3) $(\mathfrak{p}^+[A(G)]\#_t \mathfrak{p}^+[B(F)])^{-1} = \mathfrak{p}^+[A(G)]^{-1}\#_t \mathfrak{p}^+[B(F)]^{-1}$.

Proof: Let $A(G) \in \mathbb{P}(G)$ and $B(F) \in \mathbb{P}(F)$.

- (1) Let $A\#_t B \in \mathfrak{p}^+[A(G)]\#_t\mathfrak{p}^+[B(F)]$, where $A \in \mathfrak{p}^+[A(G)]$ and $B \in \mathfrak{p}^+[B(F)]$. Then $aA \in \mathfrak{ap}^+[A(G)] = \mathfrak{p}^+[aA(G)]$, and $bB \in \mathfrak{p}^+[bB(G)]$. By Theorem 2.6 (2),

$$a^{1-t}b^t(A\#_t B) = (aA)\#_t(bB) \in (\mathfrak{ap}^+[A(G)])\#_t(\mathfrak{bp}^+[B(F)]).$$

So $a^{1-t}b^t(\mathfrak{p}^+[A(G)]\#_t\mathfrak{p}^+[B(F)]) \subseteq (\mathfrak{ap}^+[A(G)])\#_t(\mathfrak{bp}^+[B(F)])$.

Let $C\#_t D \in (\mathfrak{ap}^+[A(G)])\#_t(\mathfrak{bp}^+[B(F)])$, where $C \in \mathfrak{p}^+[aA(G)]$ and $D \in \mathfrak{p}^+[bB(F)]$. Then $a^{-1}C \in \mathfrak{p}^+[A(G)]$ and $b^{-1}D \in \mathfrak{p}^+[B(F)]$, and furthermore, by Theorem 2.6 (2)

$$C\#_t D = a^{1-t}b^t[(a^{-1}C)\#_t(b^{-1}D)] \in a^{1-t}b^t(\mathfrak{p}^+[A(G)]\#_t\mathfrak{p}^+[B(F)]).$$

- (2) By Theorem 2.6 (3), $A\#_t B = B\#_{1-t}A$ for any $A \in \mathfrak{p}^+[A(G)]$ and $B \in \mathfrak{p}^+[B(F)]$. Thus, it is proved.
- (3) By Theorem 2.6 (8), $(A\#_t B)^{-1} = A^{-1}\#_t B^{-1}$ for any $A \in \mathfrak{p}^+[A(G)]$ and $B \in \mathfrak{p}^+[B(F)]$. Thus, it is proved. ■

5. Difference of partial matrices and Loewner order on partial matrices

Analogous to the Loewner order on \mathbb{H} , we define the relation for G -partial semi-definite matrices.

Definition 5.1: For a given completable graph G , we define the relation \leq on $\mathbb{H}(G)$ as follows:

- (i) $A(G) \geq B(G)$ if and only if $A(G) - B(G) \in \overline{\mathbb{P}}(G)$;
- (ii) $A(G) > B(G)$ if and only if $A(G) - B(G) \in \mathbb{P}(G)$.

Theorem 5.2: The relation \leq is indeed a partial order on $\mathbb{H}(G)$ with a completable graph G .

Proof: Let G be a completable graph.

(Reflexive) Since $A(G) - A(G)$ is the zero matrix, it holds $A(G) \leq A(G)$ for all $A(G) \in \mathbb{H}(G)$.

(Anti-symmetric) Suppose that $A(G) \leq B(G)$ and $B(G) \leq A(G)$ for $A(G), B(G) \in \mathbb{H}(G)$. Since $A(G) - B(G)$ and $A(G) - B(G)$ partial positive semidefinite, then the diagonal entries of $A(G) - B(G)$ must be 0, implying $A(G) - B(G) = 0$. Thus $A(G) = B(G)$.

(Transitive) Suppose that $A(G) \leq B(G)$ and $B(G) \leq C(G)$ for $A(G), B(G), C(G) \in \mathbb{H}(G)$. Let $\alpha \subset \{1, 2, \dots, n\}$ such that $A(G)[\alpha]$ be a fully specified principal submatrix. Clearly, $M = (A(G) - B(G))[\alpha]$ and $N = (B(G) - C(G))[\alpha]$ are fully specified principal submatrices of $A(G) - B(G)$ and $B(G) - C(G)$, respectively. Since $A(G) - B(G)$ and $B(G) - C(G)$ are partial positive semidefinite, M and N are positive semidefinite. Note that $M+N$ is a fully specified principal submatrix of $A(G) - C(G)$ and positive semidefinite. Since α is arbitrary, every fully specified submatrix of $A(G) - C(G)$ is positive semidefinite, implying $A(G) \leq C(G)$. ■

Example 5.3: Consider the following G -partial (positive) matrices:

$$A(G) = \begin{bmatrix} 3 & ? & 2 & 1 \\ ? & 6 & 1 & ? \\ 2 & 1 & 4 & 1 \\ 1 & ? & 1 & 5 \end{bmatrix}, \quad B(G) = \begin{bmatrix} 1 & ? & 1 & 1 \\ ? & 5 & 1 & ? \\ 1 & 1 & 3 & 1 \\ 1 & ? & 1 & 2 \end{bmatrix}.$$

Since the difference

$$C(G) := A(G) - B(G) = \begin{bmatrix} 2 & ? & 1 & 0 \\ ? & 1 & 0 & ? \\ 1 & 0 & 1 & 0 \\ 0 & ? & 0 & 3 \end{bmatrix}$$

is partial positive definite, by the definition $A(G) > B(G)$.

Remark 5.4: In general, the existence of positive completions of two partial matrices $A(G)$ and $B(G)$ does not guarantee the existence of positive completion of $A(G) - B(G)$. For example, the partial matrices $A(G)$ and $B(G)$ in Example 5.3 have positive definite completions (see Example 2.4). Since the difference $C(G)$ is partial positive definite with positive completable graph G , it also has positive definite completions. On the other hand, the partial matrix $A(G) - 3B(G)$ does not have any positive (semi-)definite completion since it is not partial positive (semi-)definite although $A(G) \geq 0$, $3B(G) \geq 0$, and they have positive (semi-)definite completions.

Lemma 5.5: Let G be a given completable graph. Suppose that $A(G)$ and $B(G)$ are partial positive definite matrices. Then $\mathfrak{p}^+[A(G) - B(G)] \subset \mathfrak{p}^+[A(G)] - \mathfrak{p}^+[B(G)]$.

Proof: Let $G = (V, E)$ be a given completable graph. If $\mathfrak{p}^+[A(G) - B(G)] = \emptyset$, it is trivial. Let $C \in \mathfrak{p}^+[A(G) - B(G)]$. Then C is a positive definite completion of $A(G) - B(G)$. That is, there exist a positive definite matrix $C = [c_{ij}]$ such that $c_{ij} = a_{ij} - b_{ij}$ for all $\{i, j\} \in E$, where $A(G) = [a_{ij}]_{\{i, j\} \in E}$ and $B(G) = [b_{ij}]_{\{i, j\} \in E}$. Let $B = [b_{ij}] \in \mathfrak{p}^+[B(G)]$. Since $B > 0$ and $C > 0$, we have $B + C > 0$. Since $b_{ij} + c_{ij} = a_{ij}$ for all $\{i, j\} \in E$, it follows that $B + C \in \mathfrak{p}^+[A(G)]$. Since B is arbitrary, it holds that $B + C \in \mathfrak{p}^+[A(G)]$ for all $B \in \mathfrak{p}^+[B(G)]$. Thus, $C = (B + C) - B \in \mathfrak{p}^+[A(G)] - \mathfrak{p}^+[B(G)]$. ■

Remark 5.6: (i) For a completable graph G , assume that $A(G)$ and $B(G)$ are partial positive semi-definite matrices. Then $\mathfrak{p}[A(G) - B(G)] \subset \mathfrak{p}[A(G)] - \mathfrak{p}[B(G)]$ by following the proof of Lemma 5.5 similarly to positive semi-definite completions.

(ii) Since $\mathfrak{p}^+[A(G)] - \mathfrak{p}^+[B(G)]$ may or may not include an element which is not a positive definite matrix, in general, $\mathfrak{p}^+[A(G) - B(G)] \neq \mathfrak{p}^+[A(G)] - \mathfrak{p}^+[B(G)]$. For example, consider the following partial positive definite matrices.

$$A(G) = \begin{bmatrix} 2.5 & 1 & ? \\ 1 & 2.5 & 1 \\ ? & 1 & 2.5 \end{bmatrix}, \quad B(G) = \begin{bmatrix} 2 & 1 & ? \\ 1 & 2 & 1 \\ ? & 1 & 2 \end{bmatrix}.$$

Then it is clear that

$$A = \begin{bmatrix} 2.5 & 1 & 1 \\ 1 & 2.5 & 1 \\ 1 & 1 & 2.5 \end{bmatrix} \in \mathfrak{p}[A(G)], \quad B = \begin{bmatrix} 2 & 1 & 0 \\ 1 & 2 & 1 \\ 0 & 1 & 2 \end{bmatrix} \in \mathfrak{p}[B(G)],$$

and

$$A - B = \begin{bmatrix} 0.5 & 0 & 1 \\ 0 & 0.5 & 0 \\ 1 & 0 & 0.5 \end{bmatrix} \in \mathfrak{p}^+[A(G)] - \mathfrak{p}^+[B(G)].$$

However, $A - B \notin \mathfrak{p}^+[A(G) - B(G)]$ since $A - B$ is not positive definite. This shows that $A(G) < B(G)$ does not imply $A < B$ for all $A \in \mathfrak{p}^+[A(G)]$ and $B \in \mathfrak{p}^+[B(G)]$.

Theorem 5.7: *Let G be a given completable graph. Suppose that $A(G)$ and $B(G)$ are G -partial matrices with $0 < B(G) < A(G)$. Then*

$$\mathfrak{p}^+[A(G) - B(G)] = (\mathfrak{p}^+[A(G)] - \mathfrak{p}^+[B(G)]) \cap \mathbb{P}.$$

That is, all positive completions of $A(G) - B(G)$ are expressed as differences of positive completions of $A(G)$ and $B(G)$.

Proof: Let $C \in \mathfrak{p}^+[A(G) - B(G)]$. Then by Lemma 5.5 it follows that $C \in \mathfrak{p}^+[A(G)] - \mathfrak{p}^+[B(G)]$. Since C is positive definite, it follows that $C \in (\mathfrak{p}^+[A(G)] - \mathfrak{p}^+[B(G)]) \cap \mathbb{P}$, so $\mathfrak{p}^+[A(G) - B(G)] \subset (\mathfrak{p}^+[A(G)] - \mathfrak{p}^+[B(G)]) \cap \mathbb{P}$. Let $D \in (\mathfrak{p}^+[A(G)] - \mathfrak{p}^+[B(G)]) \cap \mathbb{P}$. Then there exist $M \in \mathfrak{p}^+[A(G)]$ and $N \in \mathfrak{p}^+[B(G)]$ such that $D = M - N$ is positive definite. Since $M - N \in \mathfrak{p}^+[A(G) - B(G)]$, we have that $D \in \mathfrak{p}^+[A(G) - B(G)]$. ■

6. Maximizing the determinant

For a given completable graph G , we see in this section several interesting consequences for positive definite completions of G -partial positive matrices maximizing the determinant with the previous notions of geometric mean and order relation.

Lemma 6.1: [36, Lemma 1] *The function $f(A) = \log \det(A)$ is strictly concave on $\mathfrak{p}^+[A(G)]$.*

Theorem 6.2: *Let G be a given completable graph, and let $A(G)$ be a G -partial matrix with $A(G) > 0$. Then there exists a unique positive definite completion of $A(G)$, say \widehat{A} , such that*

$$\det(\widehat{A}) = \max \{ \det(M) : M \in \mathfrak{p}^+[A(G)] \}.$$

Furthermore, \widehat{A} is the unique positive definite completion of $A(G)$ whose inverse $C = [c_{ij}]$ satisfies

$$c_{ij} = 0 \quad \text{for all } \{i, j\} \notin E.$$

Proof: It follows by Lemma 6.1 and Theorem 4.1 (see [36]). ■

Now we investigate relationship between \widehat{A} and other positive definite completions for their determinants.

Theorem 6.3: *Let G be a given completable graph, and let $A(G)$ be a G -partial matrix with $A(G) > 0$. For $0 < k < \det(\widehat{A})$, there exists $A \in \mathfrak{p}^+[A(G)]$ such that $\det(A) = k$.*

Proof: Since $\mathfrak{p}[A(G)]$ is convex, it is also path-connected, hence connected. Since the determinant, $\det : \mathfrak{p}[A(G)] \rightarrow \mathbb{R}$, is a continuous function on $\mathfrak{p}[A(G)]$, the range of the determinant function is connected. By the inequality of Hadamard, it follows that

$$0 \leq \det(A) \leq \prod_{i=1}^n a_{ii} \quad \text{for all } A \in \mathfrak{p}[A(G)].$$

So, $\det(\mathfrak{p}[A(G)])$ is bounded in \mathbb{R} , i.e. $\det(\mathfrak{p}[A(G)]) = [a, b]$ for some $0 \leq a < b$. Claim that $a = 0$. It is enough to show that there exist $S \in \mathfrak{p}[A(G)]$ such that $\det(S) = 0$.

Let $Z \in \mathfrak{p}[A(G)]$ with $\det(Z) \neq 0$. Pick one missing entry of $A(G)$, say x . We fix all entries of Z except x and convert Z into the block matrix of the form (11) via permutation similarity to place x in the $(1, n)$ spot. Set $\tilde{Z} = [\tilde{z}_{ij}]$ as the matrix obtained by taking $x = \sqrt{ab}$, where a, b are entries in the $(1, 1)$ and (n, n) spots, respectively. Since the determinant of the principal submatrix $\tilde{Z}[1, n]$ is zero, $\det(\tilde{Z}) = 0$. By Proposition 2.3 in [39], $\tilde{Z} \geq 0$, so $\tilde{Z} \in \mathfrak{p}[A(G)]$. ■

Using the similar proof of [40, Theorem 1], one can have an integral representation for determinants of two positive definite completion of a G -partial matrix.

Theorem 6.4: *Let \mathcal{C} be a non-empty convex subset of \mathbb{P} . Let A_0 and A_1 be in \mathcal{C} . Define $A(\lambda) := (1 - \lambda)A_0 + \lambda A_1$ for all $\lambda \in [0, 1]$. Then,*

$$\det(A_1) = \det(A_0) \exp \left\{ \int_0^1 \text{tr}(A(\lambda)^{-1}(A_1 - A_0)) \, d\lambda \right\}.$$

Proof: Let $M(\lambda) = [m_{ij}(\lambda)]_{ij}$ be a $n \times n$ Hermitian matrix whose entries $m_{ij}(\lambda)$ are functions of a parameter λ on $I = [a, b]$ and its determinant be denoted by $\Delta(\lambda)$. Assume that the functions $m_{ij}(\lambda)$ are differentiable on I for all i, j and $\det(M(\lambda)) \neq 0$ for all $\lambda \in I$. Then by the trace theorem [41, p.83], it follows that

$$\frac{d\Delta(\lambda)}{d\lambda} = \Delta(\lambda) \text{tr} \left(M(\lambda)^{-1} \frac{dM(\lambda)}{d\lambda} \right), \tag{8}$$

where $dM(\lambda)/d\lambda$ is the matrix whose elements are $d(m_{ij}(\lambda))/d\lambda$. Clearly, $A(\lambda) \subset \mathcal{C} \subset \mathbb{P}$ for all $\lambda \in [0, 1]$. Since $dA(\lambda)/d\lambda = A_1 - A_0$, by (8) it follows that

$$\frac{d\Delta(\lambda)}{d\lambda} = \Delta(\lambda) \text{tr} (A(\lambda)^{-1}(A_1 - A_0)). \tag{9}$$

Since $\Delta(\lambda) \neq 0$, the equation (9) can be rewritten as

$$\frac{d\Delta(\lambda)}{\Delta(\lambda)} = \text{tr} (A(\lambda)^{-1}(A_1 - A_0)) \, d\lambda. \tag{10}$$

Since $A(\lambda)^{-1}$ is continuous, $\text{tr}(A(\lambda)^{-1}(A_1 - A_0))$ is a continuous function of λ on $[0, 1]$. Also, $\Delta(\lambda)$ is a polynomial of λ . By integrating both sides of the equation (10) we have

$$\ln(|\Delta(1)/\Delta(0)|) = \int_0^1 \text{tr}(A(\lambda)^{-1}(A_1 - A_0)) \, d\lambda.$$

Note that $\Delta(0) = \det(A_0)$ and $\Delta(1) = \det(A_1)$. ■

Consider a zero-mean, multivariate Gaussian distribution on \mathbb{R}^n ,

$$f(x) = (2\pi)^{-n/2} |\Sigma|^{-1/2} \exp \left\{ -\frac{1}{2} x^\top \Sigma^{-1} x \right\},$$

where the covariance matrix $\Sigma(G)$ is partial positive definite with a completable graph G . Recall that $H(f)$ in (3) is the Shannon entropy.

Theorem 6.5: *Let f_0, f_1 be zero-mean, multivariate Gaussian distributions on \mathbb{R}^n with covariance matrices $\Sigma_0, \Sigma_1 \in \mathfrak{p}^+[\Sigma(G)]$, respectively. Then the following are true:*

(1) *the difference between Shannon entropy for two distributions can be expressed as*

$$H(f_1) - H(f_0) = \frac{1}{2} \int_0^1 \text{tr}(\Sigma(\lambda)^{-1}(\Sigma_1 - \Sigma_0)) \, d\lambda,$$

where $\Sigma(\lambda) = (1 - \lambda)\Sigma_0 + \lambda\Sigma_1$.

(2) *for a zero-mean, multivariate Gaussian distribution on \mathbb{R}^n with the covariance matrix $\Sigma_0 \#_t \Sigma_1$, says $f_0 \#_t f_1$, it holds that*

$$H(f_0 \#_t f_1) = (1 - t)H(f_0) + tH(f_1).$$

Proof: (i) By Equation (3) and Theorem 6.4, it holds. (ii) by Equation (3) and Theorem 2.6 (9), it follows that

$$\begin{aligned} H(f_0 \#_t f_1) &= \frac{1}{2} \log(\det \Sigma_0 \#_t \Sigma_1) + \frac{1}{2} n(1 + \log(2\pi)) \\ &= \frac{1}{2} ((1 - t) \log(\det \Sigma_0) + t \log(\det \Sigma_1)) + \frac{1}{2} n(1 + \log(2\pi)) \\ &= (1 - t)H(f_0) + tH(f_1). \end{aligned} \quad \blacksquare$$

Especially, when $t = 1/2$, it shows that entropy of distribution with the geometric mean of two covariances is the average of entropy of two distributions with each covariance.

Corollary 6.6: *Let $A(G_1) > 0$ and $B(G_2) > 0$ be given partial matrices with completable graphs G_1 and G_2 . Suppose that $A(G_1) \#_t B(G_2)$ is convex. Then the determinant of $A \#_t B$ in $A(G_1) \#_t B(G_2)$ can be expressed as*

$$\det(\widehat{A})^{1-t} \det(\widehat{B})^t \cdot \exp \left\{ \int_0^1 \text{tr}(S_t(\lambda)^{-1} T_t) \, d\lambda \right\},$$

where $S_t(\lambda) = (1 - \lambda)(\widehat{A} \#_t \widehat{B}) + \lambda(A \#_t B)$ and $T_t = \widehat{A} \#_t \widehat{B} - A \#_t B$.

Theorem 6.7 (Fischer’s Inequality[38]): Let a $(m + n) \times (m + n)$ Hermitian positive definite matrix H have the partitioned form

$$H = \begin{bmatrix} A & X \\ X & B \end{bmatrix},$$

where $A \in M_m$ and $B \in M_n$. Then

$$\det H \leq (\det A)(\det B)$$

with equality if and only if $X = 0$.

The following is a similar result to Fischer’s Inequality for partial matrices.

Proposition 6.8: Let $G_1 = (V_1, E_1)$ and $G_2 = (V_2, E_2)$ be disjoint completable graphs with $V_1 \cap V_2 = \emptyset$. Let $G = (V, E)$ with $V = V_1 \cup V_2$ and $E = E_1 \cup E_2$. Let

$$H(G) = \begin{bmatrix} A(G_1) & X \\ X & B(G_2) \end{bmatrix},$$

where all entries of X are missing. If $A(G_1) > 0$ and $B(G_2) > 0$, then

$$\det H \leq (\det \widehat{A})(\det \widehat{B}) \quad \text{for all } H \in \mathfrak{p}[A(G)]$$

with equality if and only if $X = \mathbf{0}$. Here \widehat{A} and \widehat{B} are the maximum determinant positive definite completions of $A(G_1)$ and $B(G_2)$, respectively.

Proof: Since G_1 and G_2 are chordal, so is G . By Theorem 2.2, the graph G is completable. Since $A(G_1) > 0$ and $B(G_2) > 0$, it is clear that $H(G) > 0$, implying $\mathfrak{p}^+[H(G)] \neq \emptyset$. By Theorem 6.2, the graphs $A(G_1)$, $B(G_2)$ have the maximum determinant positive definite completions, say \widehat{A} , \widehat{B} respectively. By Theorem 6.7, it follows that $\det(H) \leq (\det A)(\det B) \leq (\det \widehat{A})(\det \widehat{B})$ for all $H \in \mathfrak{p}[H(G)]$, $A \in \mathfrak{p}[A(G_1)]$, and $B \in \mathfrak{p}[B(G_2)]$. When $X = \mathbf{0}$, the equality holds. If $\det(H) = (\det \widehat{A})(\det \widehat{B})$, then $X = \mathbf{0}$ by Theorem 6.7. ■

Lemma 6.9: The map $f : \mathbb{P} \times \mathbb{P} \rightarrow \mathbb{P}$ defined by $f(A, B) = \log \det(A\#_t B)$ for any $t \in [0, 1]$ is strictly jointly concave.

Proof: By Theorem 2.6 (1), the function f on $\mathbb{P} \times \mathbb{P}$ can be written as

$$f(A, B) = \log \det(A\#_t B) = (1 - t) \log \det A + t \log \det B.$$

Since the map $\log \det : \mathbb{P} \rightarrow \mathbb{R}$ is strictly concave, so is f . ■

Remark 6.10: We can show the joint concavity of the map f in Lemma 6.9 by using the joint concavity of geometric mean. Indeed, by Theorem 2.6 (7),

$$[(1 - \lambda)A_1 + \lambda A_2]\#_t[(1 - \lambda)B_1 + \lambda B_2] \geq (1 - \lambda)(A_1\#_t B_1) + \lambda(A_2\#_t B_2)$$

for any $A_1, A_2, B_1, B_2 \in \mathbb{P}$ and any $\lambda \in [0, 1]$. Since $0 < A \leq B$ implies $0 < \det A \leq \det B$ from [38, Corollary 7.7.4], the logarithmic map $\log : (0, \infty) \rightarrow \mathbb{R}$ is monotone increasing,

and the map $\log \det : \mathbb{P} \rightarrow \mathbb{R}$ is strictly concave,

$$\begin{aligned} f((1-\lambda)(A_1, B_1) + \lambda(A_2, B_2)) &= \log \det[(1-\lambda)A_1 + \lambda A_2] \#_t [(1-\lambda)B_1 + \lambda B_2] \\ &\geq \log \det[(1-\lambda)(A_1 \#_t B_1) + \lambda(A_2 \#_t B_2)] \\ &\geq (1-\lambda)f(A_1, B_1) + \lambda f(A_2, B_2). \end{aligned}$$

Theorem 6.11: *Let G and F be a given completable graph, and let $A(G)$ and $B(F)$ be partial matrices with $A(G) > 0$ and $B(F) > 0$. For $t \in [0, 1]$ there exists a unique positive definite completion H of $A(G) \#_t B(F)$ such that*

$$\det(H) = \max \{ \det(M \#_t N) : M \#_t N \in A(G) \#_t B(F) \}.$$

Furthermore, $H = \widehat{A} \#_t \widehat{B}$, where \widehat{A} and \widehat{B} are the maximum determinant positive definite completions of $A(G)$ and $B(F)$, respectively.

Proof: Since $\det(M) \leq \det(\widehat{A})$ and $\det(N) \leq \det(\widehat{B})$ for all $M \in \mathfrak{p}^+[A(G)]$ and $N \in \mathfrak{p}^+[B(F)]$, it is clear that $\det(M \#_t N) = (\det(M))^{1-t} (\det(N))^t \leq (\det(\widehat{A}))^{1-t} (\det(\widehat{B}))^t = \det(\widehat{A} \#_t \widehat{B})$. We just show the uniqueness. Suppose that there exists $C \in \mathfrak{p}^+[A(G)]$ and $D \in \mathfrak{p}^+[B(F)]$ such that $\det(C \#_t D) = \det(\widehat{A} \#_t \widehat{B})$. Then, $(\det(C))^{1-t} (\det(D))^t = (\det(\widehat{A}))^{1-t} (\det(\widehat{B}))^t$. Setting $x = \det(C) / \det(\widehat{A})$, $y = \det(D) / \det(\widehat{B})$, we have $x^{1-t} y^t = 1$, implying that $(t-1) \log x = t \log y$. Since $x \leq 1$ and $y \leq 1$, it must be $x = y = 1$ for some $0 < t < 1$. Therefore, $\det(\widehat{A}) = \det(C)$ and $\det(\widehat{B}) = \det(D)$. By the uniqueness of \widehat{A} and \widehat{B} , it holds that $\widehat{A} = C$ and $\widehat{B} = D$. ■

In other words, the positive definite completion of $A(G) \#_t B(F)$ can uniquely be expressed as positive definite completions of $A(G)$ and $B(F)$ with respect to maximum determinant.

Corollary 6.12: *Let $G_1 = (V_1, E_1)$ and $G_2 = (V_2, E_2)$ be disjoint completable graphs with $V_1 \cap V_2 = \emptyset$. Let $G = (V, E)$ with $V = V_1 \cup V_2$ and $E = E_1 \cup E_2$. Let*

$$A(G) = \begin{bmatrix} A_1(G_1) & X \\ X & A_2(G_2) \end{bmatrix} \text{ and } B(G) = \begin{bmatrix} B_1(G_1) & Y \\ Y & B_2(G_2) \end{bmatrix},$$

where all entries of X and Y are missing. If $A_i(G_i) > 0$ and $B_i(G_i) > 0$ for $i = 1, 2$, then

$$\det(A \#_t B) \leq \det(A_1 \#_t B_1) \det(A_2 \#_t B_2) \quad \text{for all } A \#_t B \in A(G) \#_t B(G)$$

with equality if and only if $X = Y = \mathbf{0}$.

Proof: By Proposition 6.8 and Theorem 2.6 (9) it is trivial. ■

Theorem 6.13: *Let G be a given completable graph. If $0 < A(G) \leq B(G)$, then $0 < \det(\widehat{A}) \leq \det(\widehat{B})$.*

Proof: Since the graph $G = (V, E)$ is completable and $B(G) - A(G) > 0$, the partial matrix $B(G) - A(G)$ has the maximum determinant positive definite completion, say \widehat{M} . Let \widehat{A}

be the maximum determinant positive definite completion of $A(G)$. Let b_{ij} be entries of $B(G)$ for $\{i, j\} \in E$. Since $\widehat{M}_{ij} + \widehat{A}_{ij} = b_{ij}$ for all $\{i, j\} \in E$, $\widehat{M} + \widehat{A}$ is a positive definition completion of $B(G)$. Then it follows that

$$0 < \det(\widehat{A}) < \det(\widehat{M}) + \det(\widehat{A}) \leq \det(\widehat{M} + \widehat{A}) \leq \det(\widehat{B})$$

Note that $\det(A) + \det(B) \leq \det(A + B)$ for $A, B \in \mathbb{P}$ (see p.511, [38]). ■

7. Computational results

Consider finding the maximum determinant positive definite completion among $A(G)\#B(G)$ when $A(G)$ and $B(G)$ are $n \times n$ G -partial positive definite matrices with only one missing entry in the $(1, n)$ position, respectively.

Theorem 7.1 ([42]): *Consider the following partial matrix with the only one missing entry:*

$$H(x) = \begin{bmatrix} a & v^T & x \\ v & C & w \\ x & w^T & b \end{bmatrix}, \quad (11)$$

where all entries are given except x . If $H(x)$ is partial positive definite, $H(x)$ has a positive definite completion. Indeed, the set of all such completions is given by the inequality

$$|x - v^T C^{-1} w|^2 < \frac{\det A \det B}{(\det C)^2}.$$

Two endpoints of this interval give singular positive semidefinite completions of $H(x)$. When $x = v^T C^{-1} w$, the positive definite completion has the maximum determinant

$$\frac{\det(A) \det(B)}{(\det C)^2},$$

where

$$A = \begin{bmatrix} a & v^T \\ v & C \end{bmatrix} \quad \text{and} \quad B = \begin{bmatrix} C & w \\ w^T & b \end{bmatrix}.$$

Clearly it holds that $H(x) > 0$ if and only if $A > 0$ and $B > 0$. In [43] a robust and fast algorithm based on the preceding theorem is introduced. Suppose that a partial matrix with one or possibly more then one missing entries is given. We fix all but one entry and then place the position in the $(1, n)$ spot via permutation similarity. Then by Theorem 7.1 the maximum determinant completion can be found. Repeating this process, the sequence of completion matrices is constructed with respect to each of missing entries. It is shown

that the sequence converges to the unique global maximum determinant completion (for more information, see [43, Theorem 2]).

Now using Theorem 7.1 behaviours of $A(G)\#_t B(F)$ are shown computationally. All graphs in Figures 1–4 are generated by a MATLAB program [44].

Example 7.2: Consider the following partial matrices.

$$A(x) = \begin{bmatrix} 3 & -1 & x \\ -1 & 3 & 2 \\ x & 2 & 4 \end{bmatrix}, \quad B(y) = \begin{bmatrix} 4 & 3 & y \\ 3 & 5 & -1 \\ y & -1 & 2 \end{bmatrix},$$

where x and y are missing entries. Since $A(x) > 0$ and $B(y) > 0$, by Theorem 7.1 they have positive definite completions when $-10/3 < x < 2$ and $(-3\sqrt{11} - 3)/5 < y < (3\sqrt{11} - 3)/5$. The determinant and each eigenvalue of $A(x)\#B(y)$ with respect to such values x and y are shown in Figure 1. Also, it is shown that $A(x)\#B(y)$ have the maximum determinants when $x = -2/3$ and $y = -3/5$, respectively.

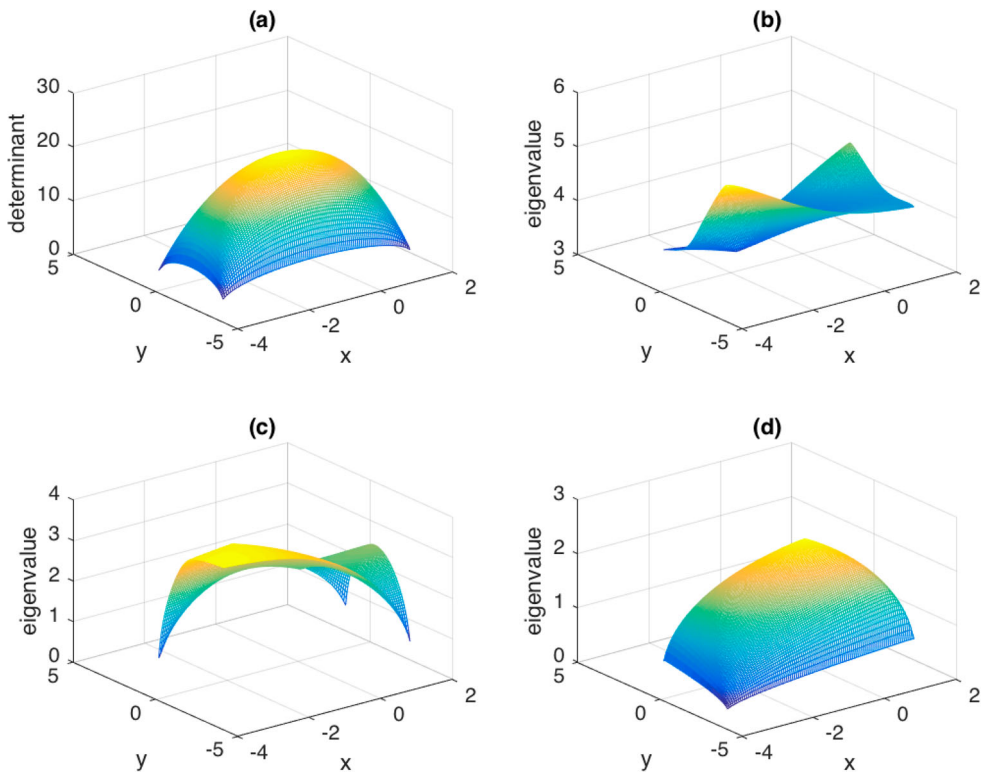


Figure 1. (a) the determinant of $A(x)\#B(y)$; (b) the maximum eigenvalue of $A(x)\#B(y)$; (c) the second maximum eigenvalue of $A(x)\#B(y)$; (d) the smallest eigenvalue of $A(x)\#B(y)$.

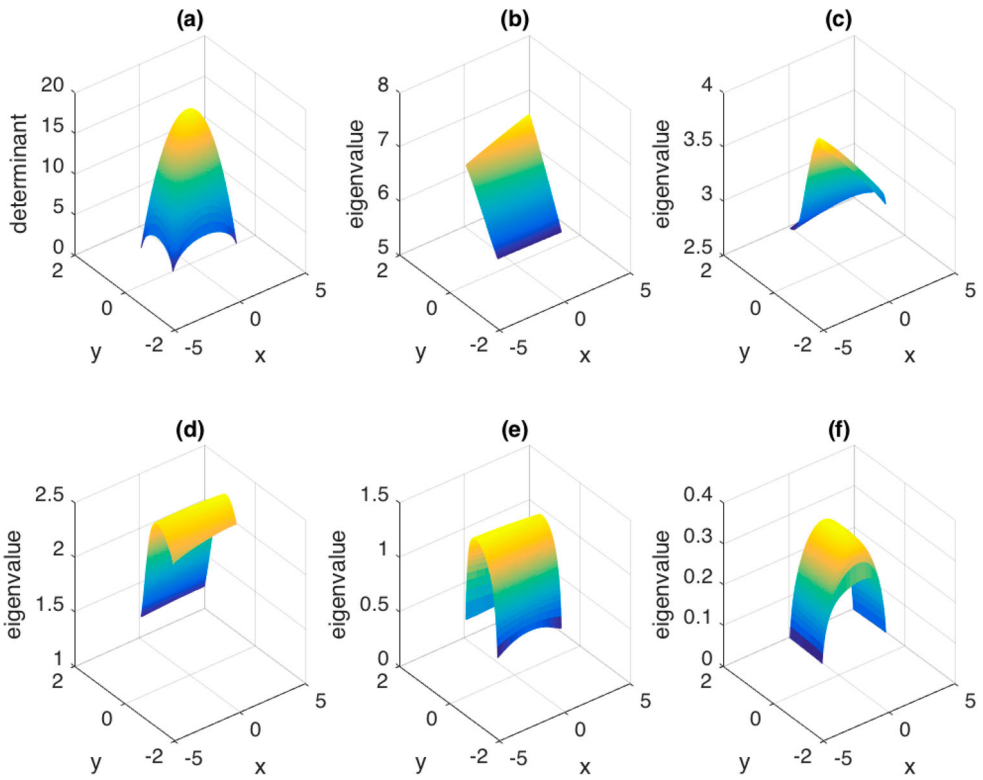


Figure 2. (a) the determinant of $A(x)\#B(y)$; (b) the largest eigenvalue of $A(x)\#B(y)$; (c) the second largest eigenvalue of $A(x)\#B(y)$; (d) the third largest eigenvalue of $A(x)\#B(y)$; (e) the fourth eigenvalue of $A(x)\#B(y)$; (f) the smallest eigenvalue of $A(x)\#B(y)$.

Example 7.3: We consider the geometric mean of same partial matrices. Let

$$A(x) = \begin{pmatrix} 3 & -1 & 1 & 1 & x \\ -1 & 3 & -1 & 1 & 0 \\ 1 & -1 & 3 & 2 & 1 \\ 1 & 1 & 2 & 4 & 2 \\ x & 0 & 1 & 2 & 4 \end{pmatrix} \text{ and } B(y) = \begin{pmatrix} 3 & 0 & 1 & 2 & y \\ 0 & 1 & 0 & -1 & 0 \\ 1 & 0 & 5 & -1 & 1 \\ 2 & -1 & -1 & 3 & 0 \\ y & 0 & 1 & 0 & 4 \end{pmatrix},$$

where x and y are missing entries. Since $A(x) > 0$ and $B(y) > 0$, by Theorem 7.1 they have positive definite completions when $(10 - \sqrt{1036})/3 < x < (10 + \sqrt{1036})/3$ and $(4 - \sqrt{34})/9 < y < (4 + \sqrt{34})/9$. The determinant and each eigenvalue of $A(x)\#B(y)$ with respect to such values x and y are shown in Figure 2. Also, it is shown that $A(x)\#B(y)$ have the maximum determinants when $x = 10/13$ and $y = 4/9$, respectively.

Example 7.4: Let

$$I_n(x) = \begin{pmatrix} 1 & 0 & x \\ 0 & I & 0 \\ x & 0 & 1 \end{pmatrix},$$

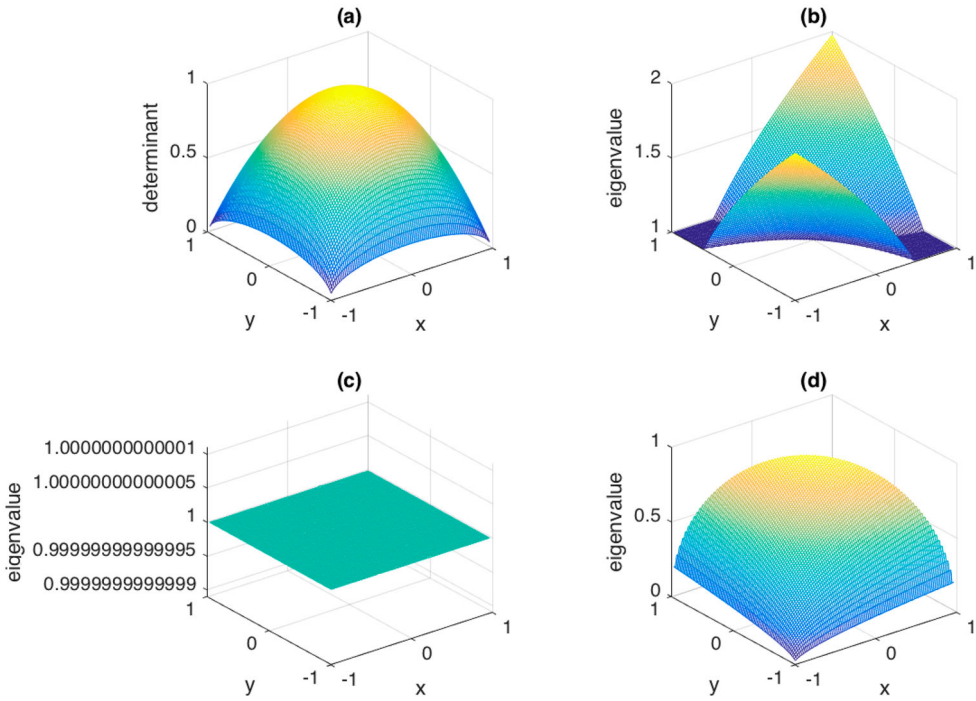


Figure 3. (a) the determinant of $I_{10}(x)\#I_{10}(y)$; (b) the largest eigenvalue of $I_{10}(x)\#I_{10}(y)$; (c) the second largest eigenvalue of $I_{10}(x)\#I_{10}(y)$; (d) the smallest eigenvalue of $I_{10}(x)\#I_{10}(y)$.

where I is the $(n - 2) \times (n - 2)$ identity matrix. By Theorem 7.1, $I_n(x)\#I_n(y)$ has positive definite completions when $x, y \in (-1, 1)$ and has the maximum determinants when $x = y = 0$. The determinant and each eigenvalue of $I(x)\#I(y)$ with respect to such values x and y are shown in Figure 3. Note that each graph looks like symmetric with respect to $y = -x$ and $y = x$ since $I_n(x)\#I_n(y) = I_n(y)\#I_n(x) = I_n(-x)\#I_n(-y)$.

Example 7.5: Let

$$A(x, y) = \begin{pmatrix} 2 & 1 & x \\ 1 & 2 & y \\ x & y & 2 \end{pmatrix}, \quad B = \begin{pmatrix} 4 & 3 & 0 \\ 3 & 5 & -1 \\ 0 & -1 & 2 \end{pmatrix},$$

By simple calculations, it can be shown that $A(x, y)\#B$ has positive definite completions if and only if $|x| < 2$, $|y| < 2$, and $6 + 3xy - 2x^2 - 2y^2 > 0$, and has the maximum determinants when $x = y = 0$. The determinant and each eigenvalue of $A(x, y)\#B$ with respect to such values x and y are shown in Figure 4.

Example 7.6: Consider the following positive definite matrix. For sufficiently small $\epsilon > 0$,

$$A = \begin{pmatrix} 1.5 & 1 & 1 \\ 1 & 1 & 1/3 + \epsilon \\ 1 & 1/3 + \epsilon & 1 \end{pmatrix}$$

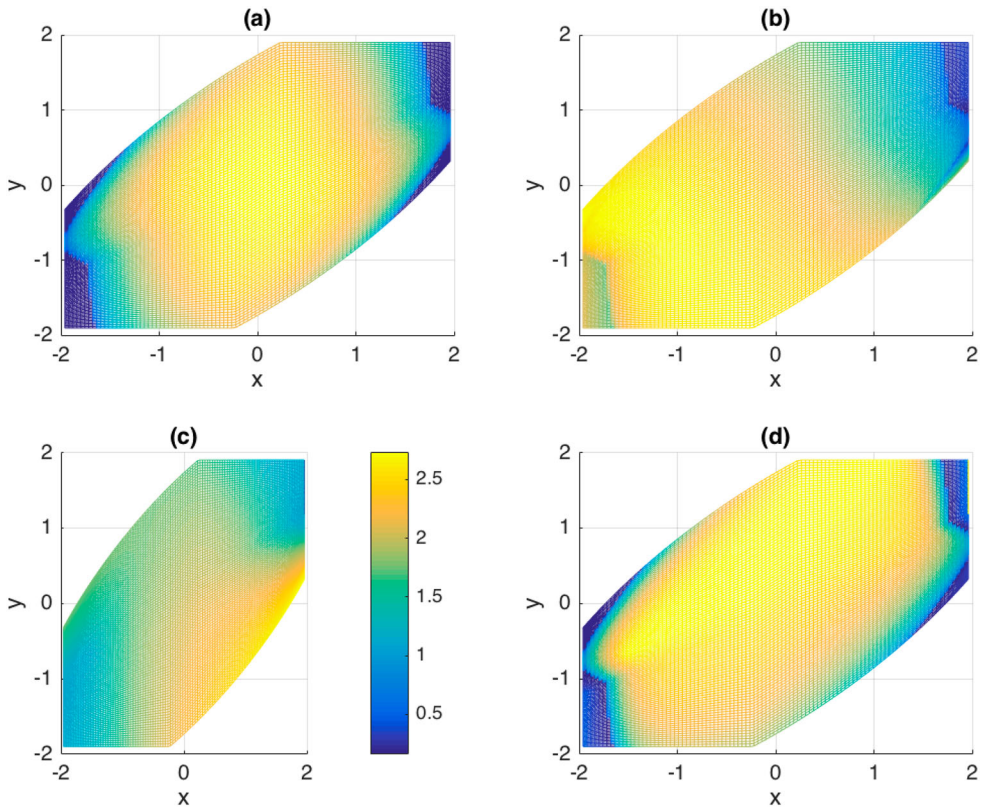


Figure 4. (a) the determinant of $A(x, y) \# B$; (b) the largest eigenvalue of $A(x, y) \# B$; (c) the second largest eigenvalue of $A(x, y) \# B$; (d) the smallest eigenvalue of $A(x, y) \# B$.

Setting $a_{23} = 0.33333333$, the matrix A will lose positivity. So, arbitrarily small perturbations of a positive definite matrix eject one from the cone of positive definite matrices. Thus, for any positive definite matrix B , $A \# B$ will be changed fast as even very small perturbation occurs.

8. Application in computer vision

Let I be a 1-dimensional intensity or 3-dimensional colour image and F be the feature image extracted from I . For a given rectangular region $R \subset F$, let $\{z_k\}_{1 \leq k \leq m}$ be the d -dimensional feature points on R . The *Region covariance (RC) descriptor* is the $d \times d$ covariance matrix of the feature points which is defined by

$$C_R = \frac{1}{m-1} \sum_{k=1}^m (z_k - \mu)(z_k - \mu)^T, \tag{12}$$

where μ is the mean of the points (see [45]).

The RC descriptor has recently become a popular method in several areas such as computer vision and applications of these topics to problems in optimization, machine learning, medical image, and etc [46]. The RC descriptors are symmetric positive definite matrices

which is relatively low-dimensional descriptors extracted from several different features computed at the level of regions. Since a single covariance matrix extracted from a region is usually enough to match the region in different views and poses, RC descriptor consequently reduces the computational cost of classification. In [47] an image classification scheme based on the generalized geometric mean of positive definite matrices computed from features of all sub-regions in a given medical image, specifically a breast histological image is proposed. Indeed, an image region R can be divided into n small non-overlapping sub-regions $\{R_1, \dots, R_n\}$ to calculate the corresponding RC descriptors C_{R_k} , $k = 1, \dots, n$. Note that the regional covariance descriptors computed from sub-image are points lying on the Riemannian manifold of positive definite matrices. Therefore, a representative of different RC descriptors calculated from sub-images can be considered as the generalized geometric mean of positive definite matrices. There are several different symmetric weighted geometric means for positive definite matrices, but we deal with the *Karcher mean* as follows: for a positive probability vector $\omega = (w_1, \dots, w_n)$

$$\Lambda(\omega; A_1, \dots, A_n) := \arg \min_{X \in \mathbb{P}} \sum_{k=1}^n w_k \delta^2(X, A_k), \quad (13)$$

where $\delta(\cdot, \cdot)$ is defined in (4). It is shown that there exists the unique minimum for the optimization problem (13) if the matrices all lie in a convex ball in a Riemannian manifold (see [48, section 6.15] and [10]). For more information, see [6,14]. Thus, the representative of RC descriptors for sub-regions can then be combined through the generalized geometric mean as $\Lambda(\omega; C_{R_1}, \dots, C_{R_n})$.

However, missing entries of RC descriptor in practice can occur due to various reasons, such as poor imaging quality or detector noise. Considering missing entries as the zero values or some values possibly reduces precision or encourage such matrix to lose its positivity. Assuming that $C_{R_1}(G_1), \dots, C_{R_n}(G_n)$ are partial positive definite matrices with completable graphs G_1, \dots, G_n , the representative of RC descriptors for sub-regions with missing entries is the generalized geometric mean of partial positive definite matrices, which is $\Lambda(\omega; C_{R_1}(G_1), \dots, C_{R_n}(G_n))$.

Here, we shortly introduce the recent result, called *no dice theorem* [49,50], to compute the Karcher mean. For a positive probability vector $\omega = (w_1, \dots, w_n)$, we denote

$$\bar{\omega} := (w_1, \dots, w_n, w_1, \dots, w_n, \dots),$$

and $s(N) := \sum_{i=1}^N \bar{\omega}_i$ for each $N \in \mathbb{N}$, where $\bar{\omega}_i$ is the i th component of the infinite-dimensional vector $\bar{\omega}$. The sequence of weighted inductive means is defined by

$$S_1 = A_1, S_N = A_{k \#_{s(N-1)/s(N)}} S_{N-1}$$

for natural numbers $N \geq 2$, where $k \in \{1, \dots, n\}$ is chosen so that $k \equiv N \pmod{n}$. Then

$$\lim_{N \rightarrow \infty} S_N = \Lambda(\omega; A_1, \dots, A_n). \quad (14)$$

This is the special case of *law of large numbers* on the Hadamard space of positive definite matrices. Using the convergence in (14), we can find approximately the Karcher mean of partial positive definite matrices to meet our needs.

9. Final remarks

We have studied the weighted geometric mean of two partial positive definite matrices including some numerical computation with missing entries. We finally close with some open problems arisen during our study. Let G and F be completable graphs.

(1) For $A, B \in \mathbb{P}$, set

$$A_0 = A, \quad B_0 = B, \quad A_{n+1} = \left(\frac{A_n^{-1} + B_n^{-1}}{2} \right)^{-1}, \quad B_{n+1} = \frac{A_n + B_n}{2}.$$

It is known from [4] that

$$A_n \leq A_{n+1} \leq A \# B \leq B_{n+1} \leq B_n$$

for all $n \geq 1$, and the sequences $\{A_n\}$ and $\{B_n\}$ converge monotonically to $A \# B$. For subsets \mathcal{S} and \mathcal{T} of \mathbb{P} , we can define the harmonic mean and arithmetic mean such as

$$\left(\frac{\mathcal{S}^{-1} + \mathcal{T}^{-1}}{2} \right)^{-1} \quad \text{and} \quad \frac{\mathcal{S} + \mathcal{T}}{2}$$

via the natural definitions of scalar multiplication, sum, and inversion in Section 4. It is questionable that the sequences $\{\mathcal{S}_n\}$ and $\{\mathcal{T}_n\}$ of subsets of \mathbb{P} constructed by the above mean iteration converge to $\mathcal{S} \# \mathcal{T}$. It may be applied to the geometric mean $\mathfrak{p}^+[A(G)] \# \mathfrak{p}^+[B(F)]$ of partial positive definite matrices $A(G)$ and $B(F)$.

- (2) One can naturally ask the geometric characterization of the geometric mean of partial positive definite matrices. In Theorem 4.1 and Remark 4.2 we have seen that $\mathfrak{p}^+[A(G)]$ is non-empty, convex, and bounded. So $\mathfrak{p}^+[A(G)] \#_t \mathfrak{p}^+[B(F)]$ is bounded by Remark 4.4, but it is unknown that $\mathfrak{p}^+[A(G)] \#_t \mathfrak{p}^+[B(F)]$ is convex for $t \in [0, 1]$. This is connected with the question in Remark 3.6.
- (3) In Theorem 6.13 we have seen that $A(G) \leq B(G)$ for partial positive definite matrices $A(G)$ and $B(G)$ implies $\det(\widehat{A}) \leq \det(\widehat{B})$, where \widehat{A} is the maximum determinant positive definite completion of $A(G)$. It naturally occurs that $\widehat{A} \leq \widehat{B}$. If it is true, then Theorem 6.13 holds automatically.

Acknowledgements

The authors wish to express their gratitude to the anonymous referees for their careful reading of the manuscript and their helpful suggestions.

Disclosure statement

No potential conflict of interest was reported by the authors.

Funding

The work of S. Kim was supported by the National Research Foundation of Korea grant funded by the Korea government (MIST) (NRF-2018R1C1B6001394). This work of H. Choi and Y. Shi was partially supported by Shanghai Sailing Program [grant number 16YF1407700], and National Nature Science Foundation of China (NSFC) [grant number 61601290].

References

- [1] Ando T. Concavity of certain maps on positive definite matrices and applications to hadamard products. *Linear Algebra Appl.* **1979**;26:203–241.
- [2] Pusz W, Woronowicz SL. Functional calculus for sesquilinear forms and the purification map. *Rep Math Phys.* **1975**;8:159–170.
- [3] Kubo F, Ando T. Means of positive linear operators. *Math Ann.* **1979**;246:205–224.
- [4] Lawson JD, Lim Y. The geometric mean, matrices, metrics, and more. *Am Math Mon.* **2001**;108:797–812.
- [5] Bhatia R. Positive definite matrices. Princeton (NJ): Princeton University Press; **2007**.
- [6] Bhatia R, Holbrook J. Riemannian geometry and matrix geometric means. *Linear Algebra Appl.* **2006**;413:594–618.
- [7] Ando T, Li CK, Mathias R. Geometric means. *Linear Algebra Appl.* **2004**;385:305–334.
- [8] Bini D, Meini B, Poloni F. An effective matrix geometric mean satisfying the ando-li-mathias properties. *Math Comput.* **2010**;79:437–452.
- [9] Hansen F. Regular operator mappings and multivariate geometric means. *Linear Algebra Appl.* **2014**;461:123–138.
- [10] Karcher H. Riemannian center of mass and mollifier smoothing. *Comm Pure Appl Math.* **1977**;30:509–541.
- [11] Lim Y, Pálfia M. Matrix power mean and the karcher mean. *J Funct Anal.* **2012**;262(4):1498–1514.
- [12] Pálfia M. Operator means of probability measures and generalized karcher equations. *Adv Math (N Y).* **2016**;289:951–1007.
- [13] Arsigny V, Fillard P, Pennec X, et al. Geometric means in a noval vector space structure on symmetric positive-definite matrices. *SIAM J Matrix Anal Appl.* **2006**;29:328–347.
- [14] Moakher M. A differential geometric approach to the geometric mean of symmetric positive-definite matrices. *SIAM J Matrix Anal Appl.* **2005**;26:735–747.
- [15] Sra S, Hosseini R. Conic geometric optimization on the manifold of positive definite matrices. *SIAM J Optim.* **2015**;25:713–739.
- [16] Bakonyi M, Woerdeman H. Matrix completions, moments, and sums of hermitian squares. Princeton (NJ): Princeton University Press; **2011**.
- [17] Candès EJ, Recht B. Exact matrix completion via convex optimization. *Found Comut Math.* **2009**;9:717–772.
- [18] Laurent M. Matrix completion problems matrix completion problems. Boston (MA): Springer US; **2009**. p. 1967–1975.
- [19] Pigott TD. A review of methods for missing data. *Educ Res Eval.* **2001**;7(4):353–383.
- [20] Arnaudon M, Barbaresco F, Yang L. Riemannian medians and means with applications to radar signal processing. *IEEE J Sel Top Signal Process.* **2013**;7(4):595–604.
- [21] Aubry A, De Maio A, Pallotta L. A geometric approach for structured radar covariance estimation. In: 2017 IEEE Radar Conference (RadarConf); May 2017; Seattle, WA. p. 0767–0771.
- [22] Barbaresco F. Innovative tools for radar signal processing based on cartan’s geometry of spd matrices & information geometry. 2008 IEEE Radar Conference; 2008; Rome. p. 1–6.
- [23] Barbaresco F. Radar detection for non-stationary time-doppler signal based on fréchet distance of geodesic curves on covariance matrix information geometry manifold. In: 2013 14th International Radar Symposium (IRS). volume 1; June 2013; Dresden. p. 307–312.
- [24] Barbaresco F, Ruiz M. Radar detection for non-stationary Doppler signal in one burst based on information geometry: Distance between paths on covariance matrices manifold. 2015 European Radar Conference (EuRAD); Sept 2015; Paris. p. 41–44.
- [25] Dryden IL, Koloydenko A, Zhou D. Non-euclidean statistics for covariance matrices, with applications to diffusion tensor imaging. *Ann Appl Stat.* **2009**;3(3):1102–1123.
- [26] Hajri H, Said S, Bombrun L, et al. A geometric learning approach on the space of complex covariance matrices. In: 2017 IEEE International Conference on Acoustics, Speech and Signal Processing (ICASSP); March 2017; New Orleans, LA. p. 2337–2341.
- [27] Said S, Bombrun L, Berthoumieu Y, et al. Riemannian gaussian distributions on the space of symmetric positive definite matrices. *IEEE Trans Inf Theory.* **2017**;63(4):2153–2170.

- [28] Said S, Hajri H, Bombrun L, et al. Gaussian distributions on riemannian symmetric spaces: statistical learning with structured covariance matrices. *IEEE Trans Inf Theory*. 2017;PP(99):1–1.
- [29] Balaji B, Barbaresco F. Application of Riemannian mean of covariance matrices to space-time adaptive processing. 2012 9th European Radar Conference; 2012; Amsterdam. p. 50–53.
- [30] Zare A, Jovanović MR, Georgiou TT. Perturbation of system dynamics and the covariance completion problem. In: 2016 IEEE 55th Conference on Decision and Control (CDC); 2016; Las Vega, NV. p. 7036–7041.
- [31] Dempster AP. Covariance selection. *Biometrics*. 1972;28(1):157–175.
- [32] Britten PL, Collins DM. Information theory as a basis for the maximum determinant. *Acta Crystallogr A Found Adv*. 1982;38(1):129–132.
- [33] Ferrante A, Pavon M. Matrix completion à la dempster by the principle of parsimony. *IEEE Trans Inf Theory*. 2011;57(6):3925–3931.
- [34] Narayan R, Nityananda R. The maximum determinant method and the maximum entropy method. *Acta Crystallogr Sect A*. 1982;38(1):122–128.
- [35] Dym H, Gohberg I. Extensions of band matrices with band inverses. *Linear Algebra Appl*. 1981;36:1–24.
- [36] Grone R, Johnson CR, Sá EM, et al. Postive definite completions of partial Hermitian matrices. *Linear Algebra Appl*. 1984;58(8):109–124.
- [37] Johnson CR, Lundquist M, Naevald G. Positive definite toeplitz completions. *J London Math Soc*. 1999;59(2):507–520.
- [38] Horn RA, Johnson CR. *Matrix analysis*. 2nd ed. Cambridge: Cambridge University Press; 2013.
- [39] Curto R, Fialkow LA. Recursively generated weighted shifts and the subnormal completion problem. *Integral Equations Operator Theory*. June 1993;17(2):202–246.
- [40] Du J, Ji J. An integral representation of the determinant of a matrix and its applications. *Discrete Contin Dyn Syst*. 2005;Supplement:225–232.
- [41] Lancaster P. *Lambda-matrices and vibrating systems*. New York: Dover Publications; 2002.
- [42] Johnson CR. Matrix completion problems: a survey. In *Matrix theory and applications* (Phoenix, AZ, 1989), volume 40 of *Proc. Sympos. Appl. Math.*, p. 171–198. Amer. Math. Soc., Providence, RI; 1990.
- [43] Glunt W, Hayden TL, Johnson CR, et al. Positive definite completions and determinant maximization. *Linear Algebra Appl*. 1999;288:1–10.
- [44] The MathWorks Inc. *MATLAB Software*, 2015. Version 8.6.0 (R2015b).
- [45] Khan AM, Sirinukunwattana K, Rajpoot N. A global covariance descriptor for nuclear atypia scoring in breast histopathology images. *IEEE J Biomed Health Inform*. 2015;19:1637–1647.
- [46] Tuzel O, Porikli F, Meer P. *Region covariance: a fast descriptor for detection and classification*. Berlin, Heidelberg: Springer; 2006. p. 589–600.
- [47] Khan AM, Sirinukunwattana K, Rajpoot N. Geodesic geometric mean of regional covariance descriptors as an image-level descriptor for nuclear atypia grading in breast histology images. Cham: Springer International Publishing; 2014. p. 101–108.
- [48] Berger M. *A panoramic view of Riemannian geometry*. Berlin: Springer-Verlag; 2003.
- [49] Holbrook J. No dice: a deterministic approach to the cartan centroid. *J Ramanujan Math Soc*. 2012;27(4):509–521.
- [50] Lim Y, Pálfia M. Weighted deterministic walks and no dice approach for the least squares mean on hadamard spaces. *Bull Lond Math Soc*. 2014;46:561–570.